

# MANCHESTER MEMORIAL ELEMENTARY SCHOOL

## PARENT MEETING



**MANCHESTER MEMORIAL ELEMENTARY SCHOOL**  
MANCHESTER-ESSEX REGIONAL SCHOOL DISTRICT, MASSACHUSETTS



**J&W ARCHITECTURE**

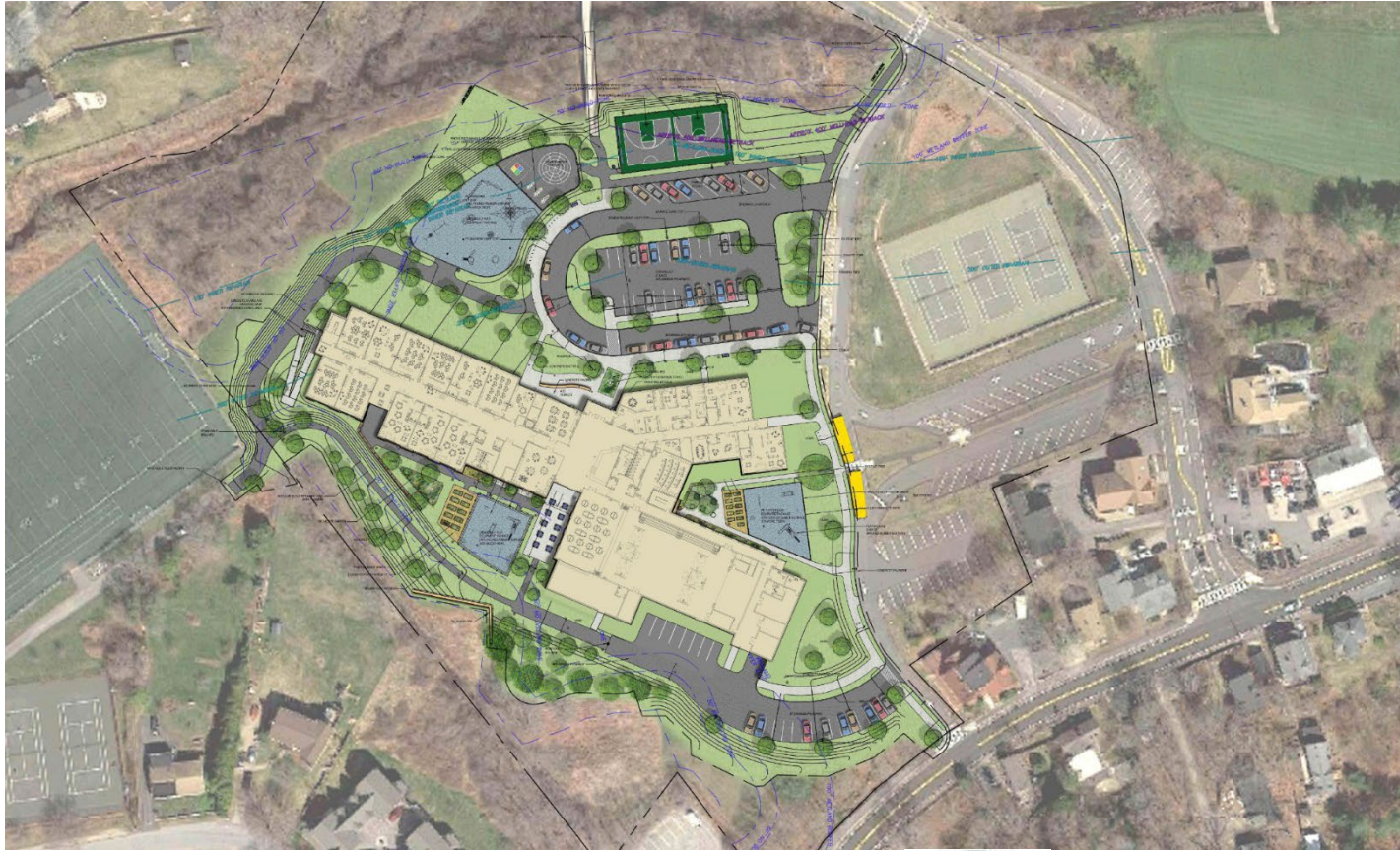
# TODAY'S AGENDA

- Welcome
- Design Update
- Construction Overview
- Discussion
- Next Steps





# SITE PLAN



## MANCHESTER MEMORIAL ELEMENTARY SCHOOL

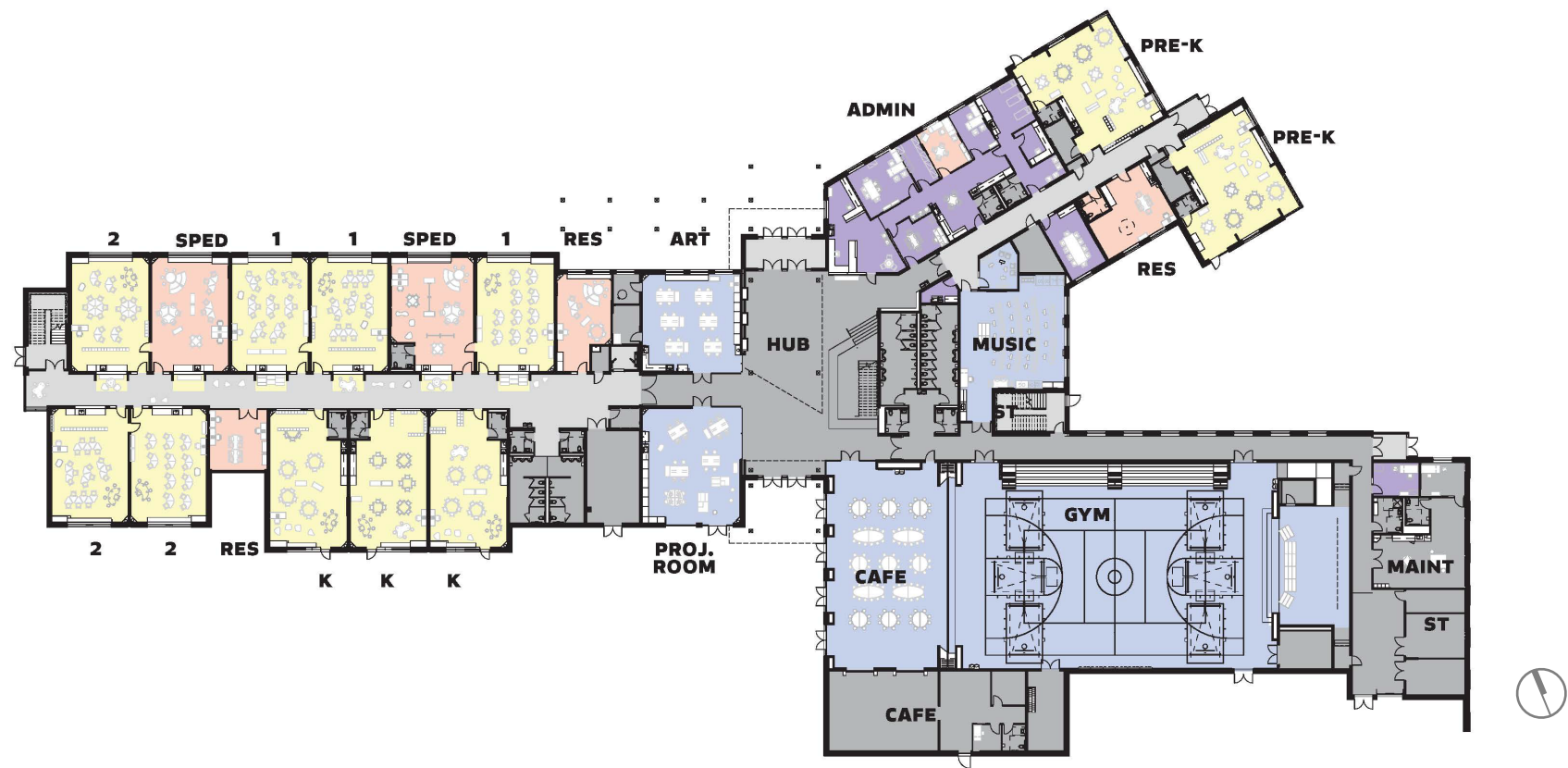
MANCHESTER-ESSEX REGIONAL SCHOOL DISTRICT, MASSACHUSETTS



J&W ARCHITECTURE

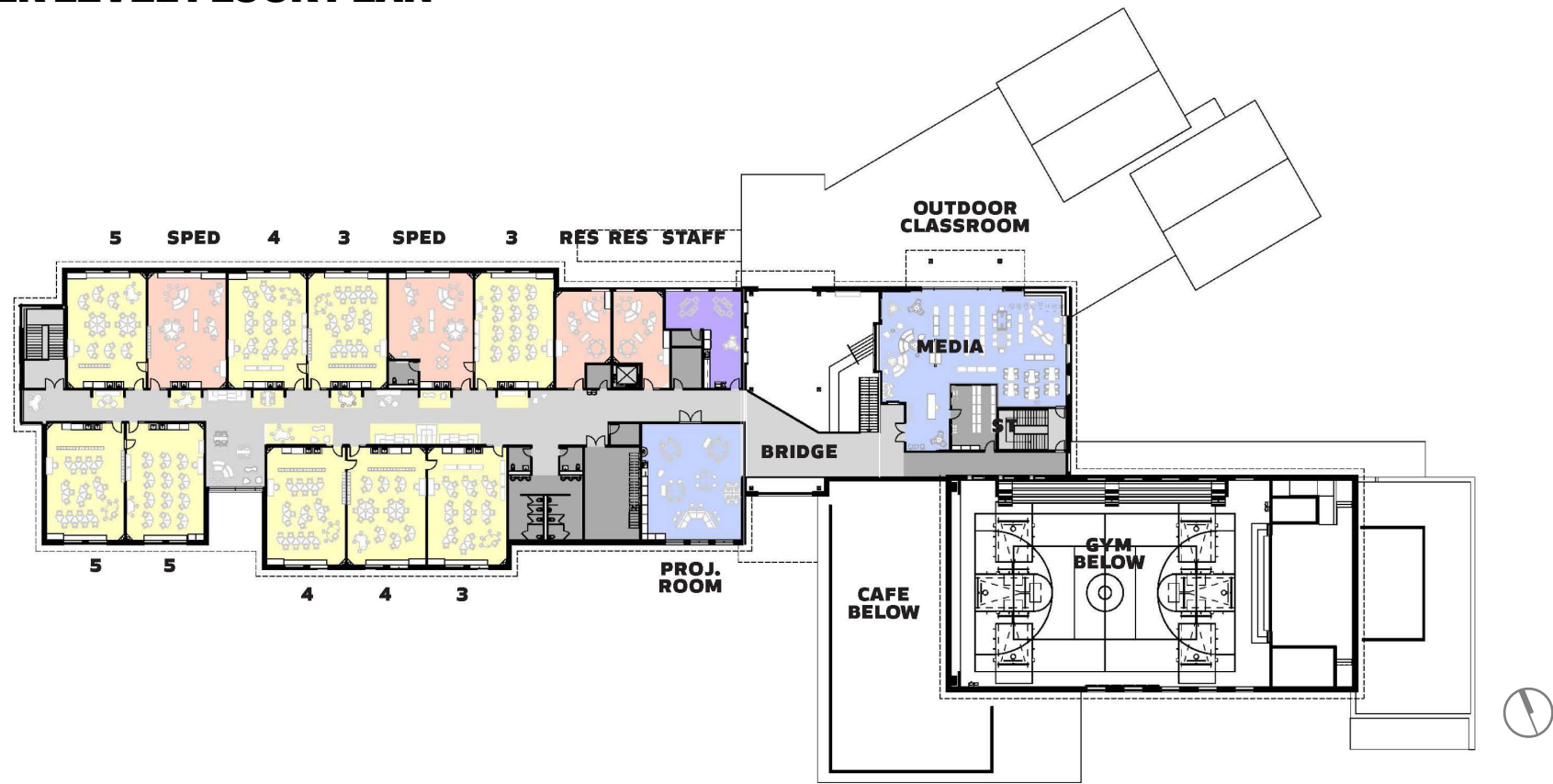


# MAIN LEVEL FLOOR PLAN

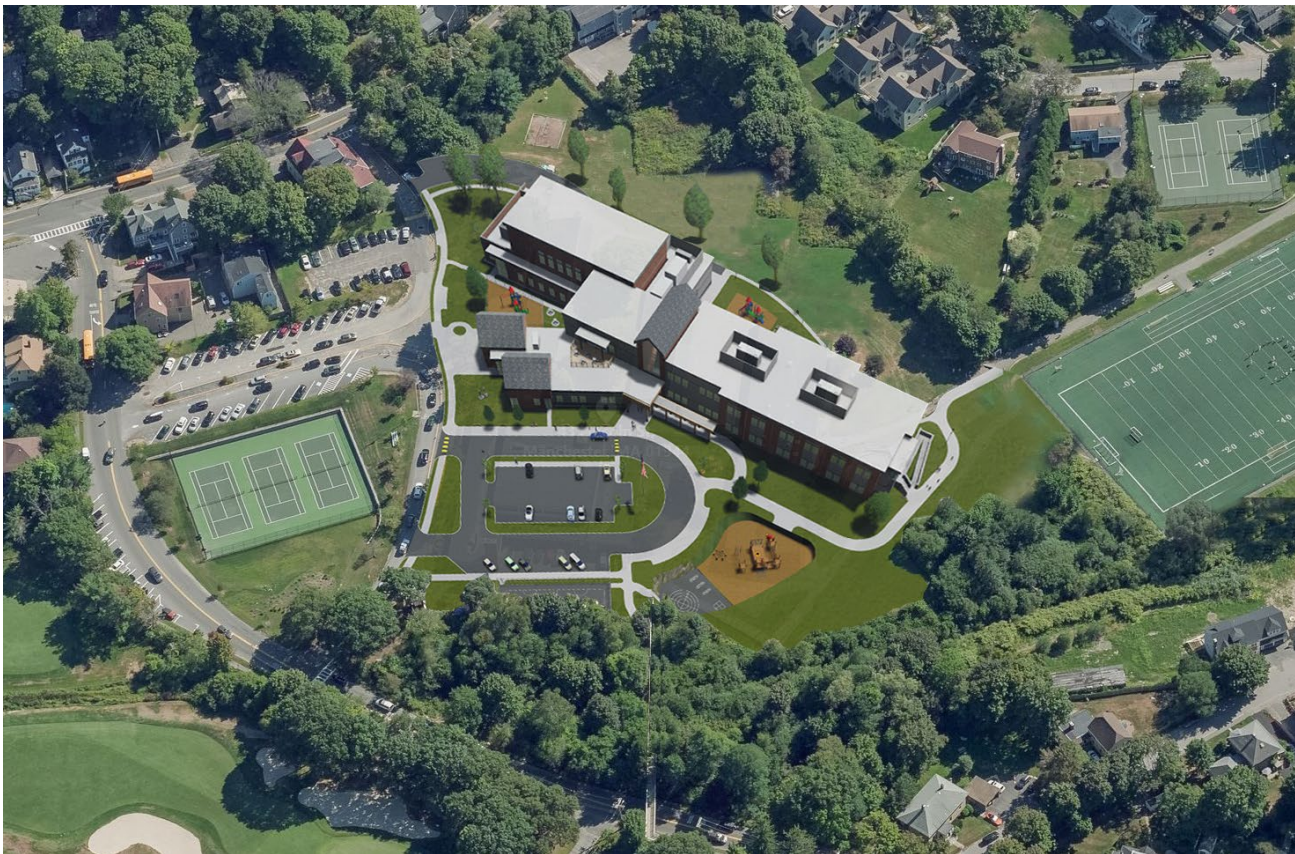




# UPPER LEVEL FLOOR PLAN



# BIRDSEYE VIEW



**MANCHESTER MEMORIAL ELEMENTARY SCHOOL**

MANCHESTER-ESSEX REGIONAL SCHOOL DISTRICT, MASSACHUSETTS



**J&W ARCHITECTURE**



# VIEW FROM LINCOLN STREET



**MANCHESTER MEMORIAL ELEMENTARY SCHOOL**  
MANCHESTER-ESSEX REGIONAL SCHOOL DISTRICT, MASSACHUSETTS



**JCJ**ARCHITECTURE



# NORTH FACADE



**MANCHESTER MEMORIAL ELEMENTARY SCHOOL**

MANCHESTER-ESSEX REGIONAL SCHOOL DISTRICT, MASSACHUSETTS



**J&W ARCHITECTURE**



# MAIN ENTRY



**MANCHESTER MEMORIAL ELEMENTARY SCHOOL**

MANCHESTER-ESSEX REGIONAL SCHOOL DISTRICT, MASSACHUSETTS



**JCJ**ARCHITECTURE

# SOUTHWEST CLASSROOM WING



**MANCHESTER MEMORIAL ELEMENTARY SCHOOL**

MANCHESTER-ESSEX REGIONAL SCHOOL DISTRICT, MASSACHUSETTS



**J&W ARCHITECTURE**



# HUB



## MANCHESTER MEMORIAL ELEMENTARY SCHOOL

MANCHESTER-ESSEX REGIONAL SCHOOL DISTRICT, MASSACHUSETTS



J&W ARCHITECTURE

# CLASSROOM COMMUNITY - UPPER LEVEL



**MANCHESTER MEMORIAL ELEMENTARY SCHOOL**  
MANCHESTER-ESSEX REGIONAL SCHOOL DISTRICT, MASSACHUSETTS



**J&W ARCHITECTURE**



# CLASSROOM COMMUNITY - LOWER LEVEL



**MANCHESTER MEMORIAL ELEMENTARY SCHOOL**  
MANCHESTER-ESSEX REGIONAL SCHOOL DISTRICT, MASSACHUSETTS



**J&W ARCHITECTURE**

# TYPICAL CLASSROOM



**MANCHESTER MEMORIAL ELEMENTARY SCHOOL**  
MANCHESTER-ESSEX REGIONAL SCHOOL DISTRICT, MASSACHUSETTS



**J&W ARCHITECTURE**



# TYPICAL CLASSROOM



**MANCHESTER MEMORIAL ELEMENTARY SCHOOL**  
MANCHESTER-ESSEX REGIONAL SCHOOL DISTRICT, MASSACHUSETTS



**J&W ARCHITECTURE**

# PROJECT ROOM



**MANCHESTER MEMORIAL ELEMENTARY SCHOOL**  
MANCHESTER-ESSEX REGIONAL SCHOOL DISTRICT, MASSACHUSETTS



**J&W ARCHITECTURE**



# CAFETERIA / GYM / AUDITORIUM



**MANCHESTER MEMORIAL ELEMENTARY SCHOOL**  
MANCHESTER-ESSEX REGIONAL SCHOOL DISTRICT, MASSACHUSETTS



**JCJ**ARCHITECTURE

# CAFETERIA



**MANCHESTER MEMORIAL ELEMENTARY SCHOOL**  
MANCHESTER-ESSEX REGIONAL SCHOOL DISTRICT, MASSACHUSETTS



**J&W ARCHITECTURE**



# MEDIA CENTER



**MANCHESTER MEMORIAL ELEMENTARY SCHOOL**  
MANCHESTER-ESSEX REGIONAL SCHOOL DISTRICT, MASSACHUSETTS



**J&W ARCHITECTURE**

# CONSTRUCTION OVERVIEW

Project Safety

Project Schedule

Site Logistics

Traffic Plan

## MA Public

- 100%
- 90% MGL 149A

## Schools

- 80% of our work
- 10+ MSBA

## Occupied

- 50% of our work

## Confined Sites

- 78% of our work





# CONSTRUCTION OVERVIEW

## SAFETY MANDATE

Above all else, ensure the health, safety and well-being of the school community, the general public and construction workforce

---

Site-Specific Safety Plan

---

School / Construction Separation

---

CORI / SORI Protocol

---

Mandatory Safety Orientations

---

School Evacuation Drills

---

Daily Communication

---



## CONSTRUCTION OVERVIEW

# W.T. Rich Site Logistics Approach

Collaborative effort  
with the right  
stakeholders

Well-conceived  
and vetted  
approach

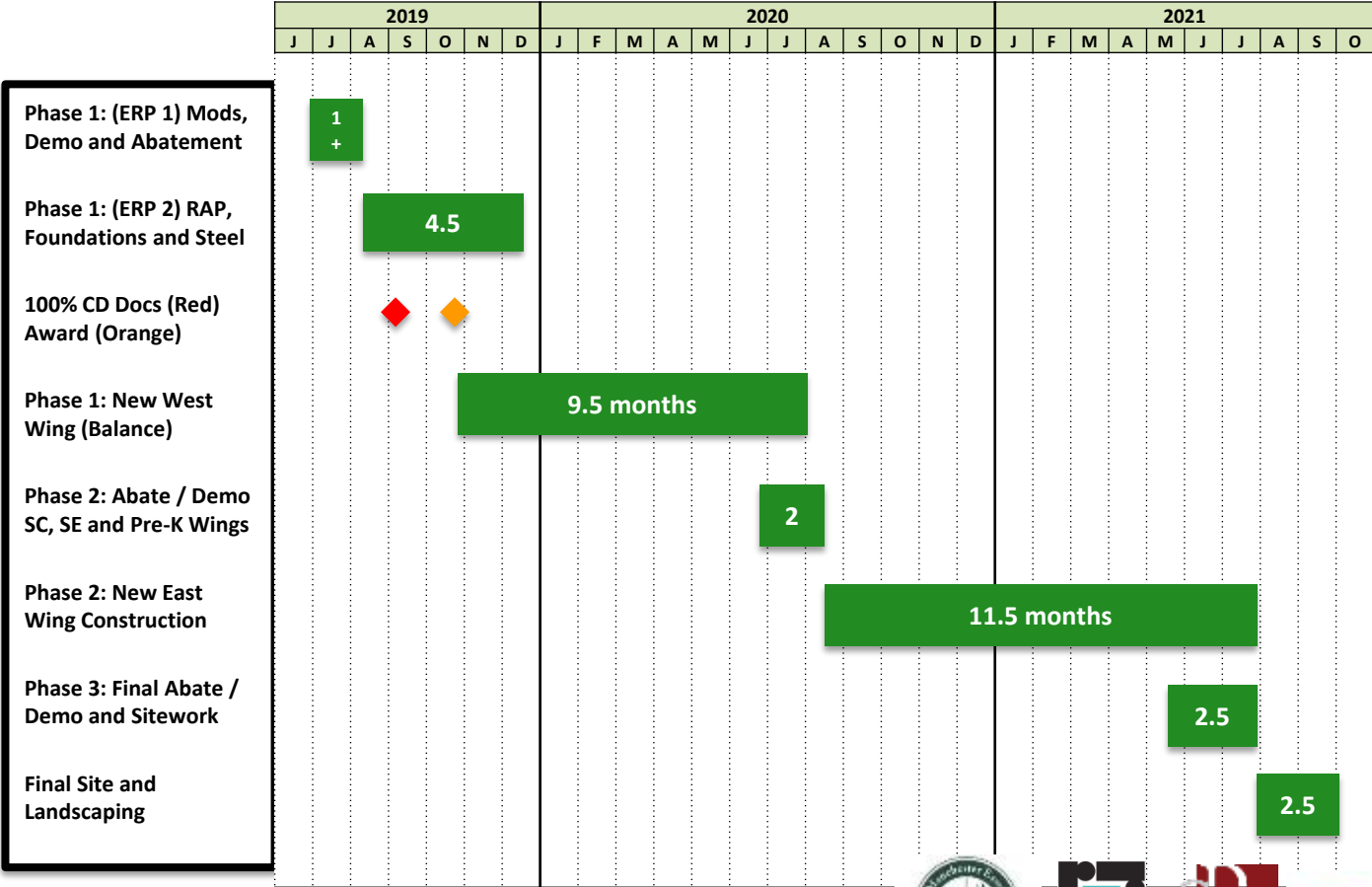
Communication  
and coordination

Consistency,  
stability and  
predictability

Adaptability



# CONSTRUCTION TIMELINE OVERVIEW



## PHASE 1 - INITIAL SETUP

JUNE 2019



**MANCHESTER MEMORIAL ELEMENTARY SCHOOL**  
MANCHESTER-ESSEX REGIONAL SCHOOL DISTRICT, MASSACHUSETTS

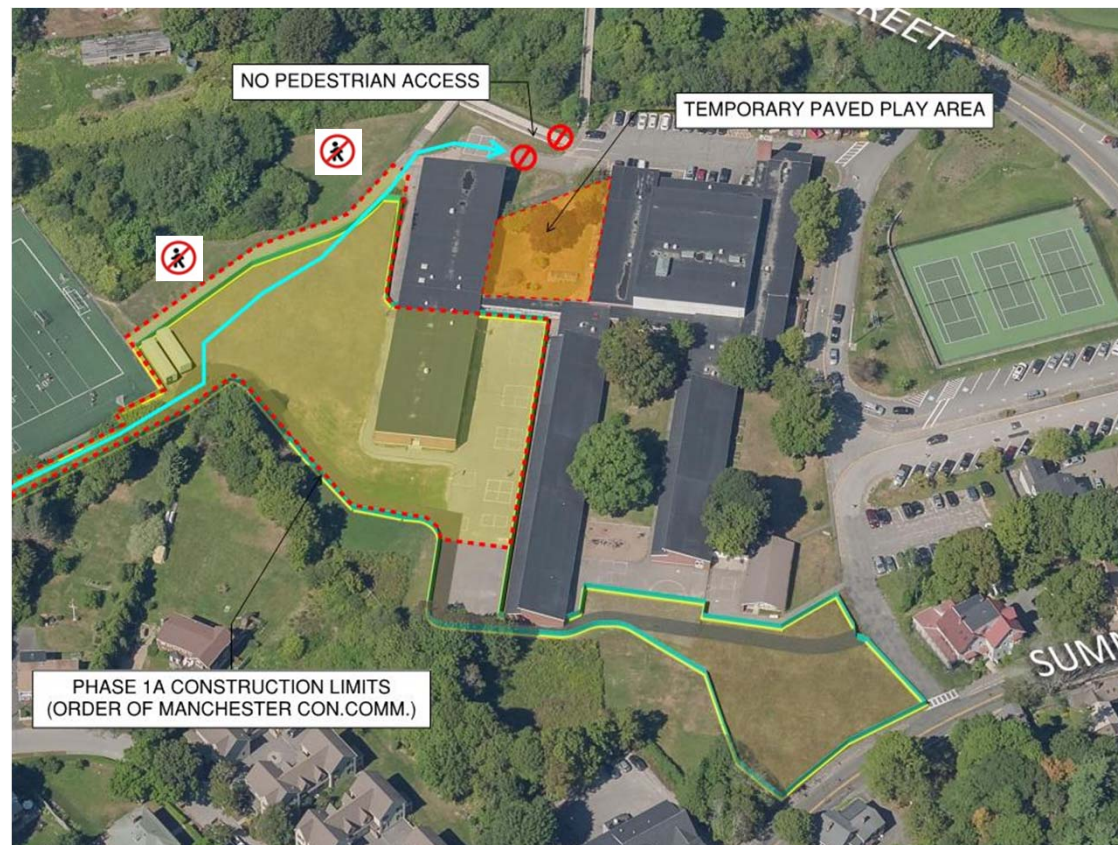


**JCJ**ARCHITECTURE



## PHASE 1 - INITIAL SETUP

JUNE 2019



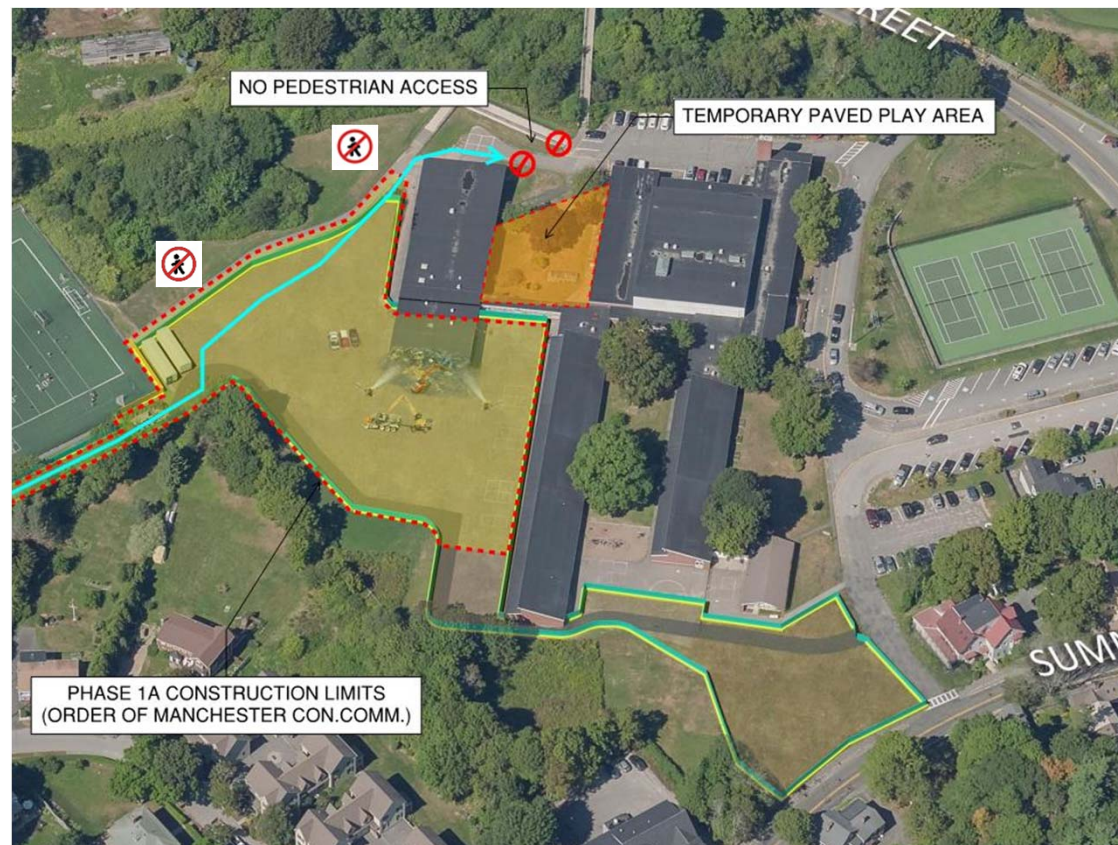
**MANCHESTER MEMORIAL ELEMENTARY SCHOOL**  
MANCHESTER-ESSEX REGIONAL SCHOOL DISTRICT, MASSACHUSETTS



**JCJ**ARCHITECTURE

## PHASE 1 - DEMOLITION

JULY 2019



**MANCHESTER MEMORIAL ELEMENTARY SCHOOL**  
MANCHESTER-ESSEX REGIONAL SCHOOL DISTRICT, MASSACHUSETTS



**JCJ**ARCHITECTURE



## PHASE 1 - STEEL

OCT - DEC 2019



**MANCHESTER MEMORIAL ELEMENTARY SCHOOL**  
MANCHESTER-ESSEX REGIONAL SCHOOL DISTRICT, MASSACHUSETTS



**J&W** ARCHITECTURE

## PHASE 1 - ENVELOPE & INTERIOR WORK

JAN - JULY 2020



**MANCHESTER MEMORIAL ELEMENTARY SCHOOL**  
MANCHESTER-ESSEX REGIONAL SCHOOL DISTRICT, MASSACHUSETTS



**JCJ**ARCHITECTURE



## PHASE 2 - DEMOLITION

JULY - AUG 2020



**MANCHESTER MEMORIAL ELEMENTARY SCHOOL**  
MANCHESTER-ESSEX REGIONAL SCHOOL DISTRICT, MASSACHUSETTS



**JCJ**ARCHITECTURE

## PHASE 2 - FOUNDATIONS

AUG - SEPT 2020



**MANCHESTER MEMORIAL ELEMENTARY SCHOOL**  
MANCHESTER-ESSEX REGIONAL SCHOOL DISTRICT, MASSACHUSETTS



**JCJ**ARCHITECTURE



## PHASE 2 - STEEL



**MANCHESTER MEMORIAL ELEMENTARY SCHOOL**  
MANCHESTER-ESSEX REGIONAL SCHOOL DISTRICT, MASSACHUSETTS



**JCJ**ARCHITECTURE

PHASE 2 - FINISHES / PHASE 3 - DEMO

SUMMER 2021



**MANCHESTER MEMORIAL ELEMENTARY SCHOOL**  
MANCHESTER-ESSEX REGIONAL SCHOOL DISTRICT, MASSACHUSETTS



**JCJ**ARCHITECTURE



## PHASE 3 - SITE FINISHES

SEPT - OCT 2021



**MANCHESTER MEMORIAL ELEMENTARY SCHOOL**  
MANCHESTER-ESSEX REGIONAL SCHOOL DISTRICT, MASSACHUSETTS



**JCJ**ARCHITECTURE

PROJECT COMPLETION

NOVEMBER 2021



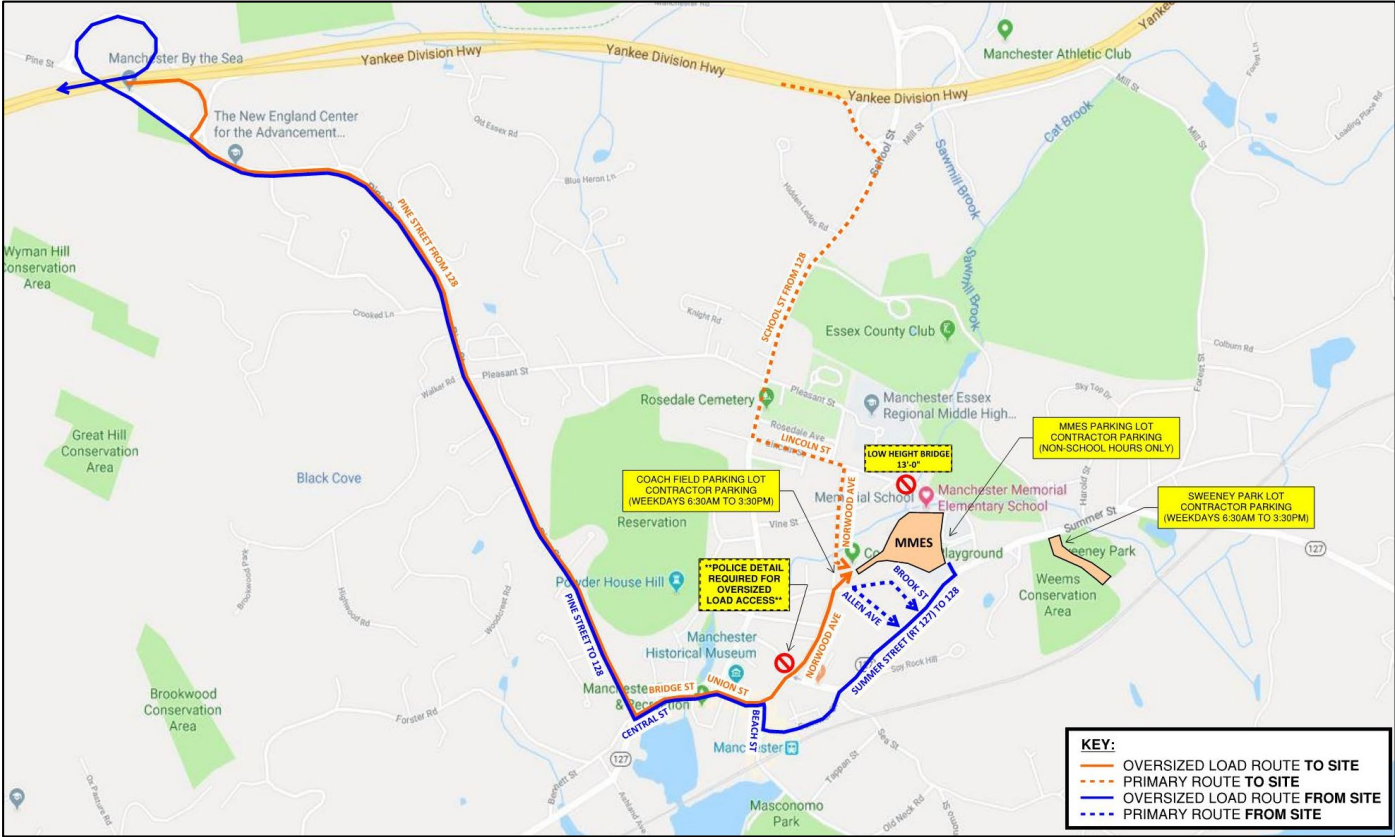
**MANCHESTER MEMORIAL ELEMENTARY SCHOOL**  
MANCHESTER-ESSEX REGIONAL SCHOOL DISTRICT, MASSACHUSETTS



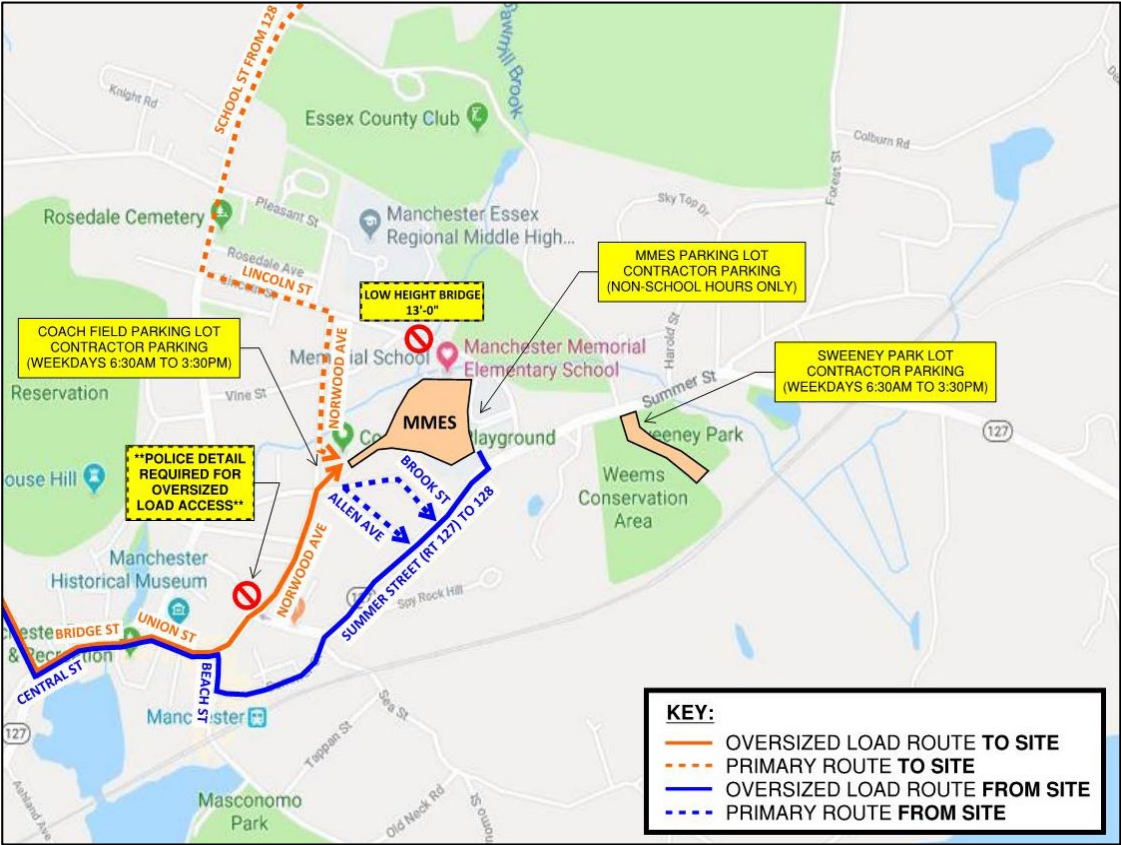
**JCJ**ARCHITECTURE



# CONSTRUCTION ACCESS PLAN



# CONSTRUCTION ACCESS PLAN





# CONSTRUCTION OVERVIEW

## Safety

- Site-specific safety plan
- On-site safety manager (Steve Buckley)
- Mandatory safety orientations for all workers / weekly foreman meetings
- Worker ID badges to verify CORI and orientations

## Work Space Segregation

- Prevent inadvertent and intentional access by unauthorized persons
- Temporary partitions / barriers (fire-rated); secure construction entrances; signage, caution tape, wayfinding
- Fire and Police Department communication and approval

## Material Deliveries

- Blackout period during drop-off (~8 to ~8:20) and pick-up (~2:50 to ~3:10)
- Limit deliveries to no later than 2:00pm
- No access through public ways during these hours
- Utilize second shift and Saturdays when necessary

## Dust and Noise Control

- Dust proof barriers
- Controlled, sealed entry points into construction areas
- Negative air pressure; **IAQ plan and monitoring**
- High noise activities will be limited to Summer and non-school hours



# School Day Operations During Construction

- Student Safety
- Flexibility 😊
- Communication
  - Principal Updates via Memorial School Weekly Newsletter
  - Call email school w/ questions concerns
  - Building Project Page FAQ – Coming in August
- Established Routines
  - Variations on existing practices



# Pick-Up & Drop-Off

## **Know Now**

- No access by foot or car from Brook Street (back of school)
- All pick-up/drop-off on Lincoln Street Side
- Bus access remains the same
- Plan for extra time
- Please use bus and/or carpool

## **Greater Detail in August**

- Pedestrian routes recommendations
- Pedestrian bridge accessibility

# Recess

## **Know Now**

- Outdoor play space will be available
- Tentative Locations
  - current “friendship garden”
  - courtyard/play structure
  - temporary play area

## **Greater Detail in August**

- Confirmed Locations
- Logistics
- Routines and playground rules



# Big Picture Take Away

- We are going to have a beautiful new facility!
- Student safety is the priority
- Flexibility is key
- Updates via principal's weekly newsletter
- School is first point of contact for parents
- Please consider bus or carpool

# DISCUSSION

## QUESTIONS?





# THANK YOU

